

Sons of the American Revolution



Cead mile Failte

A hundred thousand welcomes

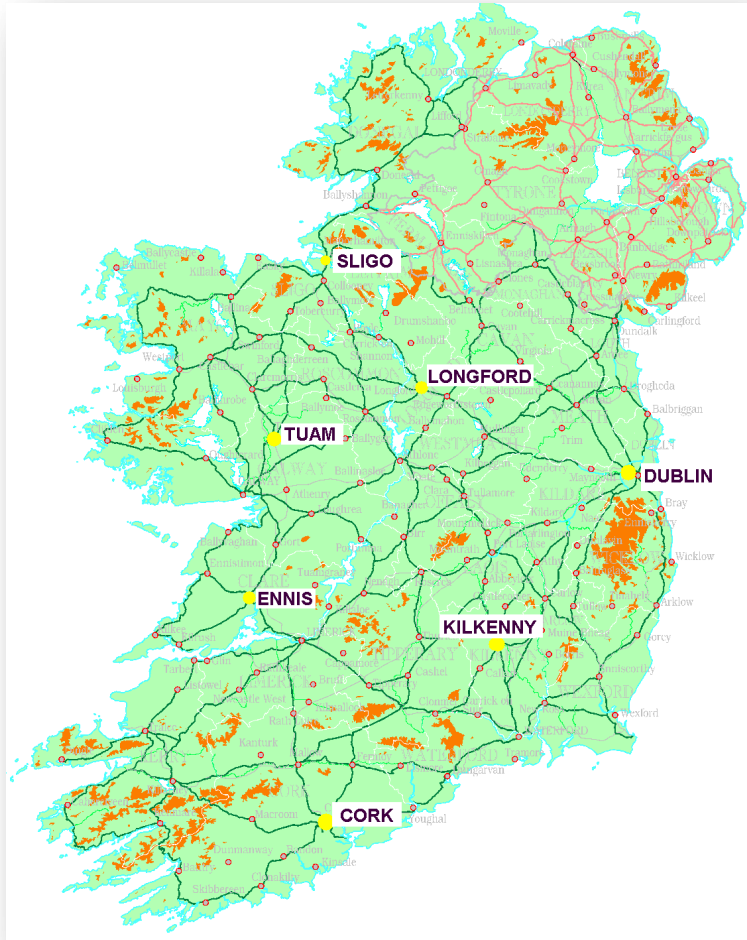
Dominic Cronin
Colm Brennan
Tony Murphy

Topics

- Who we are
- History of Ordnance Survey Ireland
- How can we help Genealogists?
- New technology that may help
- Q&A

Who are we?

OSi – Irish National Mapping Agency



- Established in 1824
- Established as a State Body in 2002
- Advisor to Government on matter relating to spatial data
- HQ - Phoenix Park
- 6 Regional Locations
- Commercial & Public Mandate
- Web/Ecommerce

OSi - part of Ireland's new Land Management Organisation

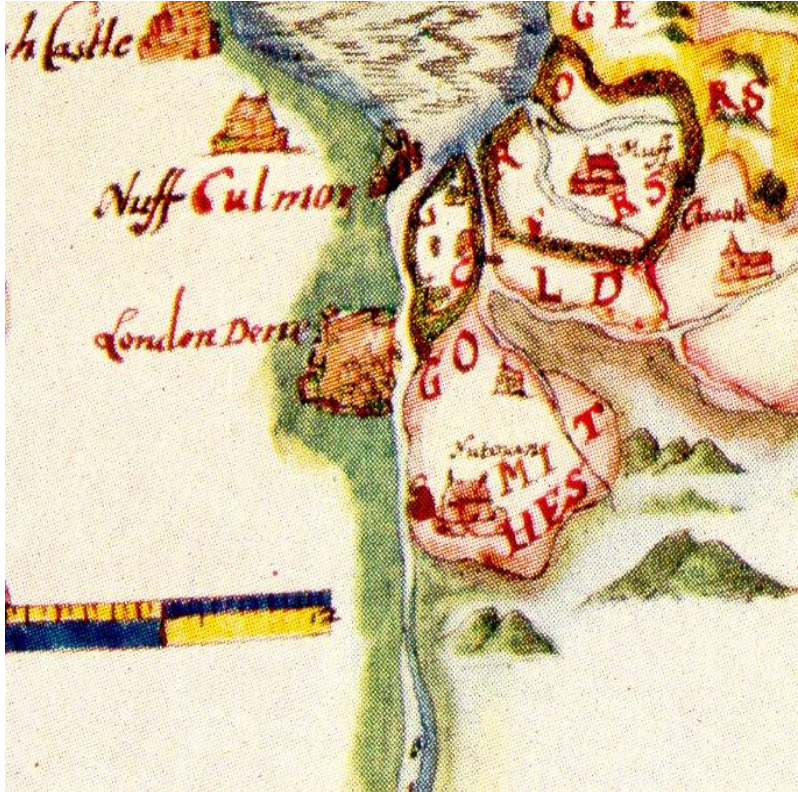
New State body currently being formed from the merger of Ordnance Survey Ireland, the Property Registration Authority and the Valuation Office.

New Organisation will be called Tailte Éireann



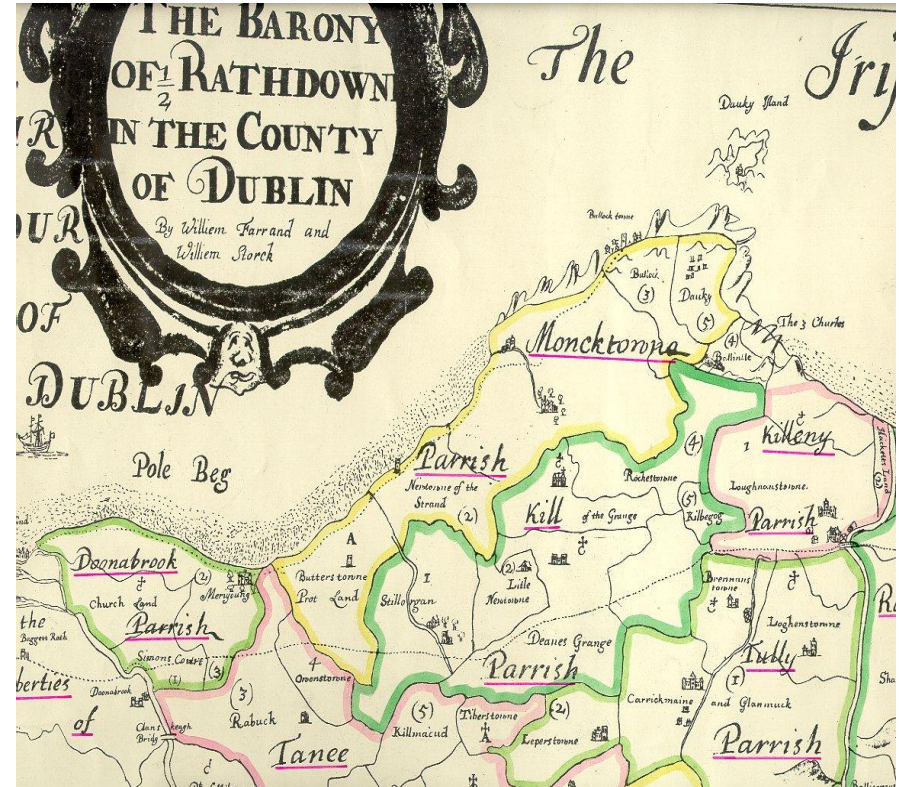
But where have we come from?

PLANTATION MAP



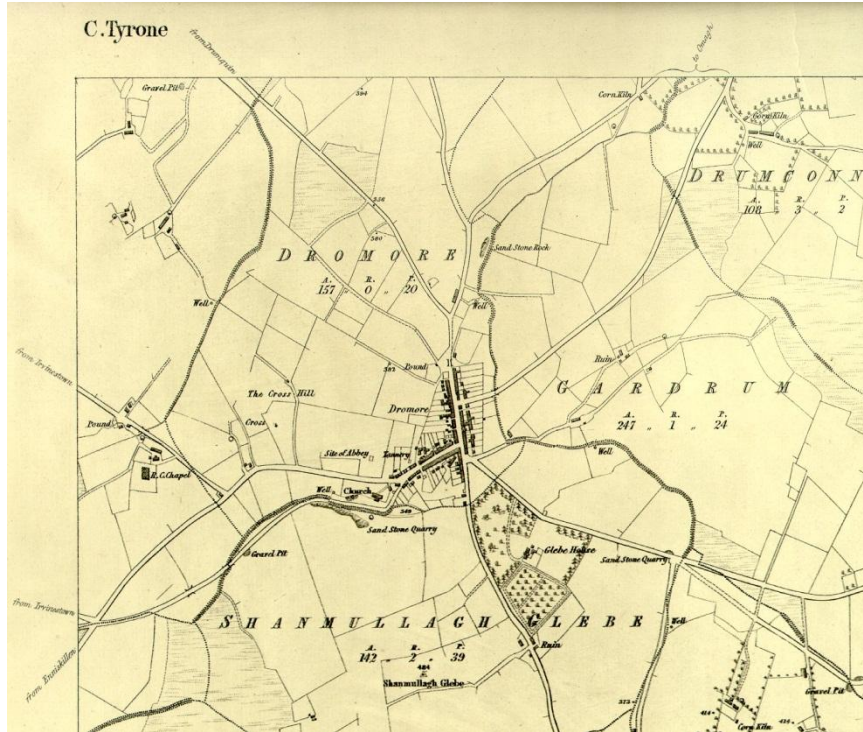
During the Plantation (16th and 17th Century) many maps were made to mark out the extent of lands

DOWN SURVEY 1655



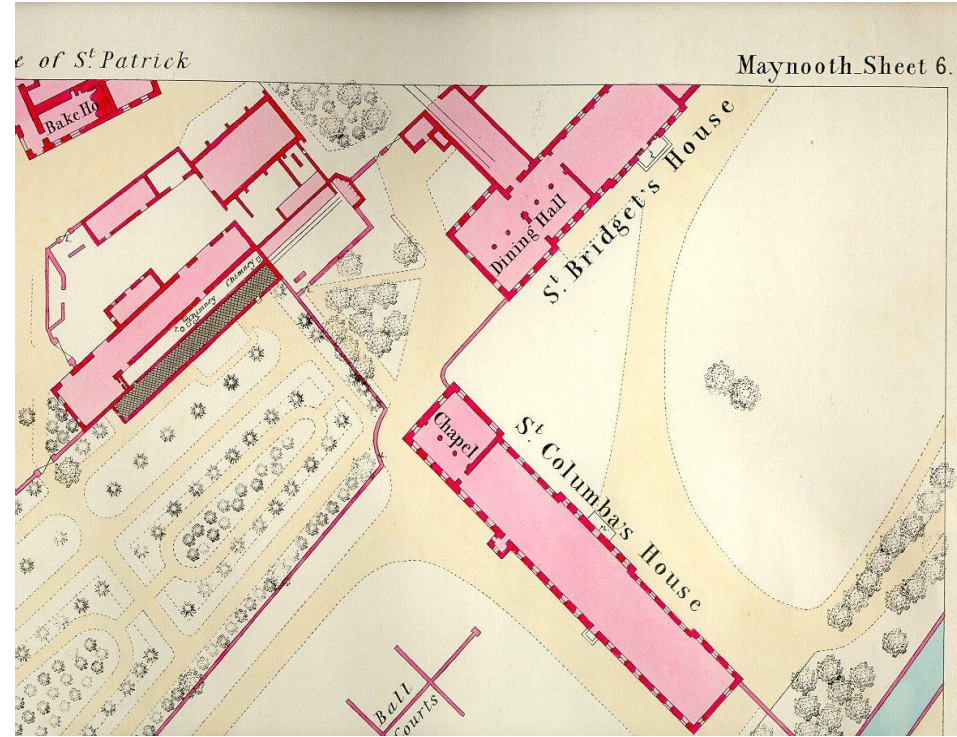
**This is a portion of a Down Survey map
County Dublin 1655 (hand coloured)
The Down survey was carried out by William
Petty during the years 1654-1658**

First edition 6 inch



This is a portion of an original print of a 6 inch to 1 mile map. All of Ireland was surveyed and the maps published (1824-1842) by the Ordnance Survey

TOWNPLANS 1:500 (Maynooth)



In the 1840's the Ordnance Survey produced maps of cities and towns at a larger scale. This map shows a portion of Maynooth at a scale of 1:500, published in 1874(hand Coloured)

COPPER PLATE PRINTING

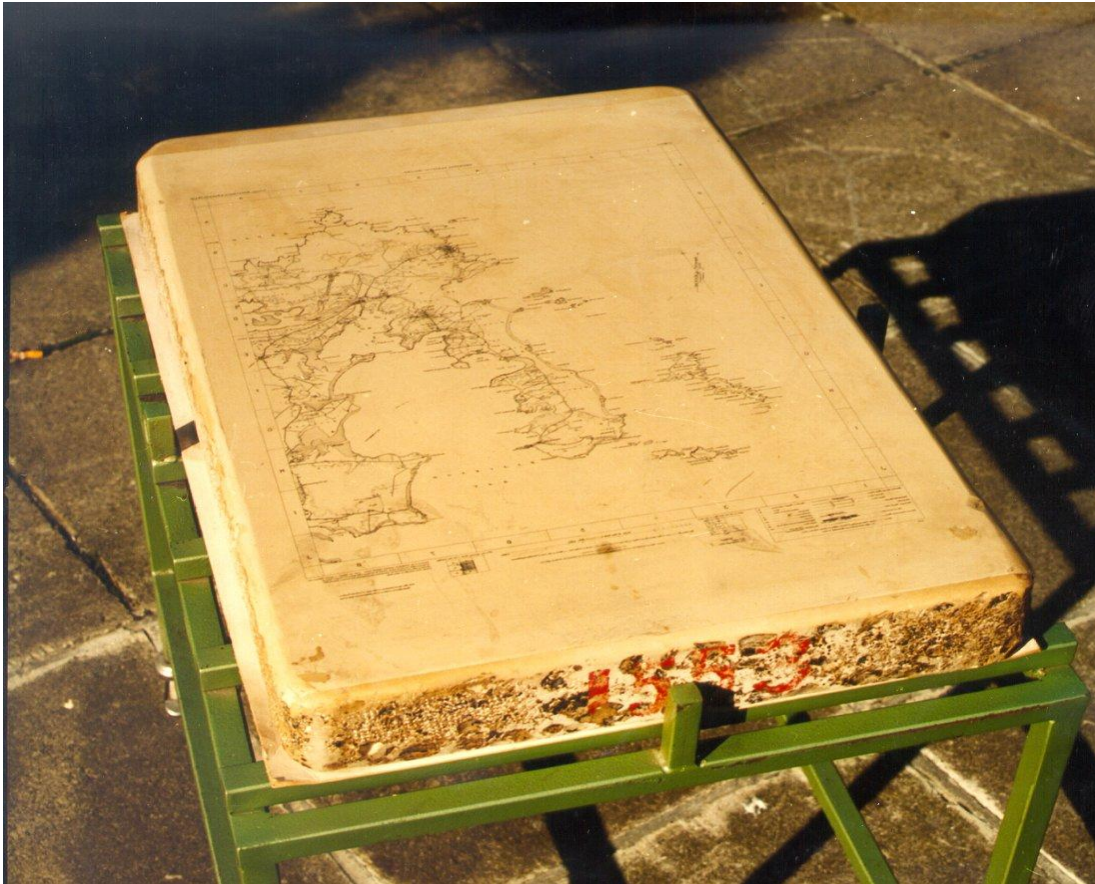


Permission and finance was given to publish the first OS map series 1824-42. The method used was to engrave the maps in reverse on a flat rectangular sheet of copper.



Ink was rolled into the grooves on the plate and surplus ink was wiped off. The plate was then passed through a printing press. This press dates back to the 1800

LITHOGRAPHIC PRINTING STONE



The first colour printing was produced using lithographic stone. On the stone you see a reverse reading image of the map

ORDNANCE SURVEY IN IRELAND

- **Spring Rice Committee**
 - Named after Thomas Spring Rice (1791-1866) MP for Limerick
- **Board of Ordnance - set up in 1791**
- **Founded 1824**
- **To Enable Grand Jury's create an Equitable Local Taxation System**
- **First Country in the world to be mapped at such a large scale**

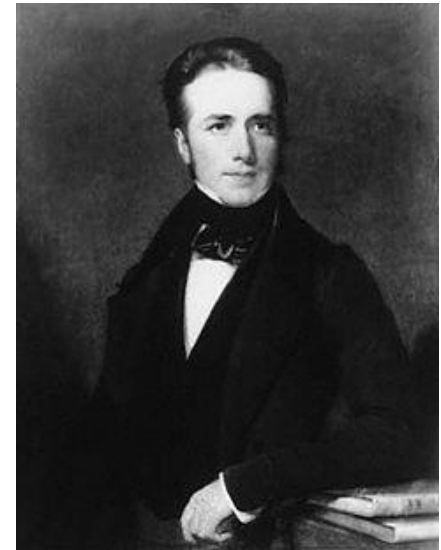
Key personnel in the first Survey



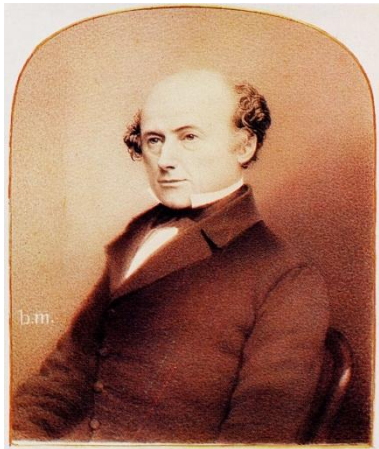
THOMAS COLBY



JOHN O'DONOVAN



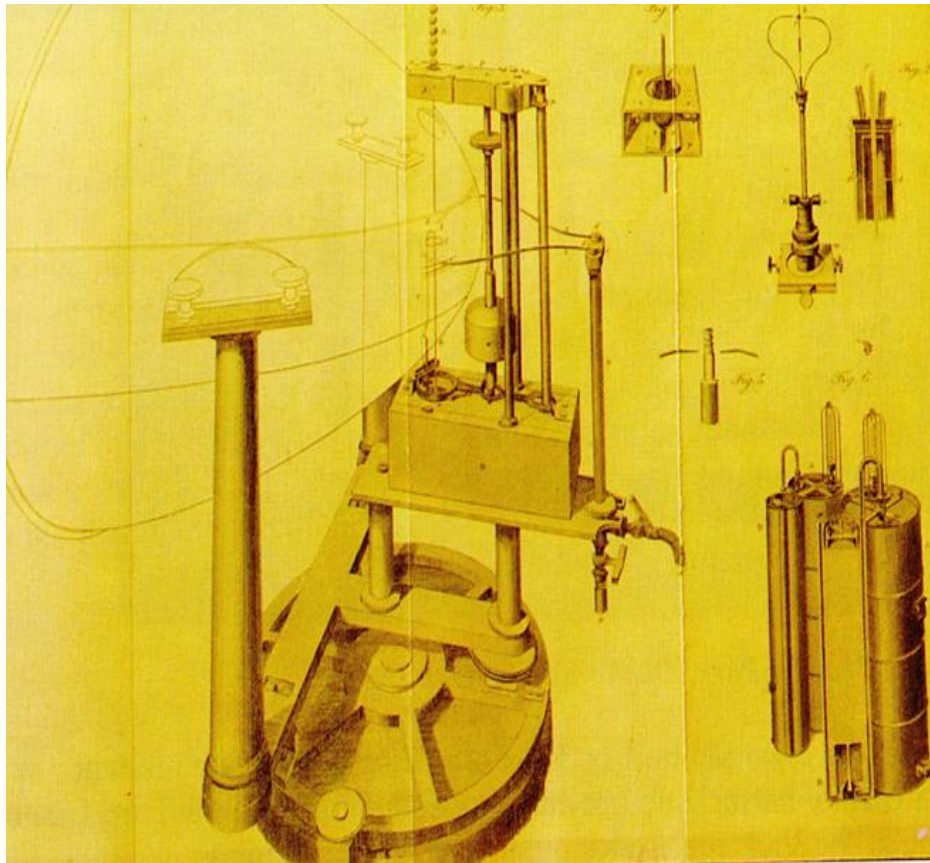
THOMAS DRUMMOND



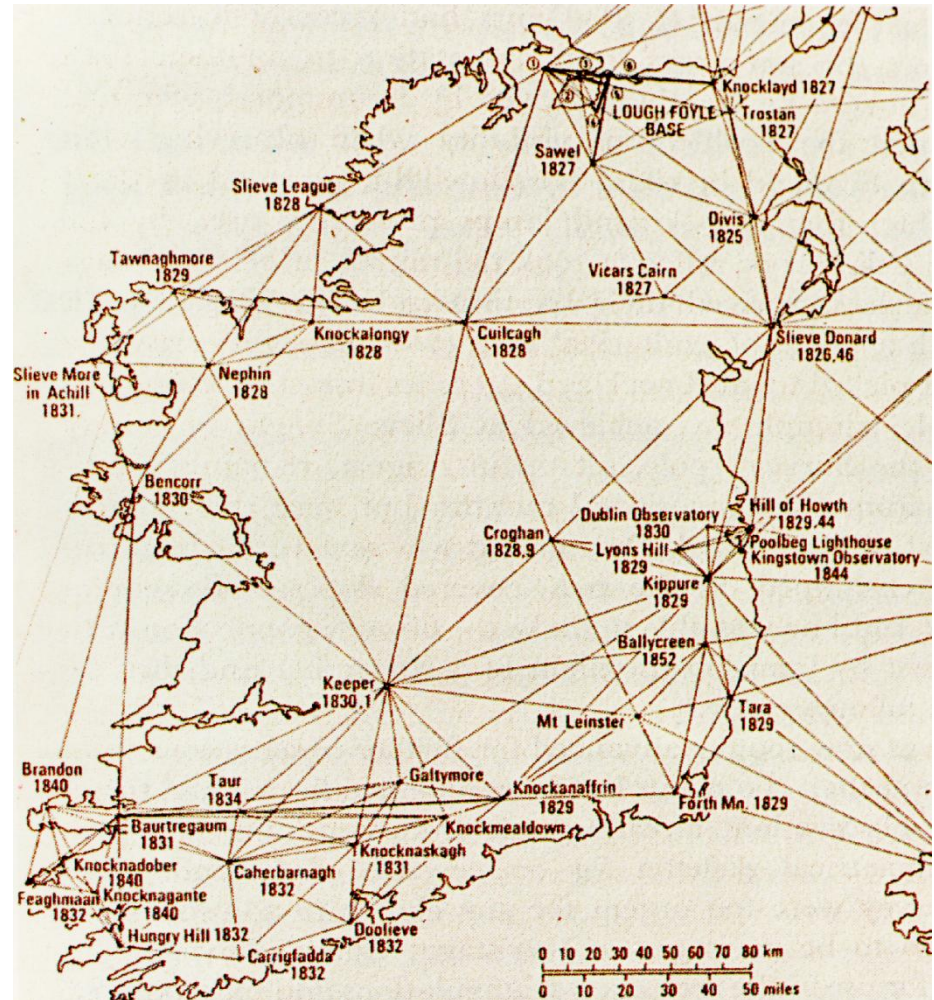
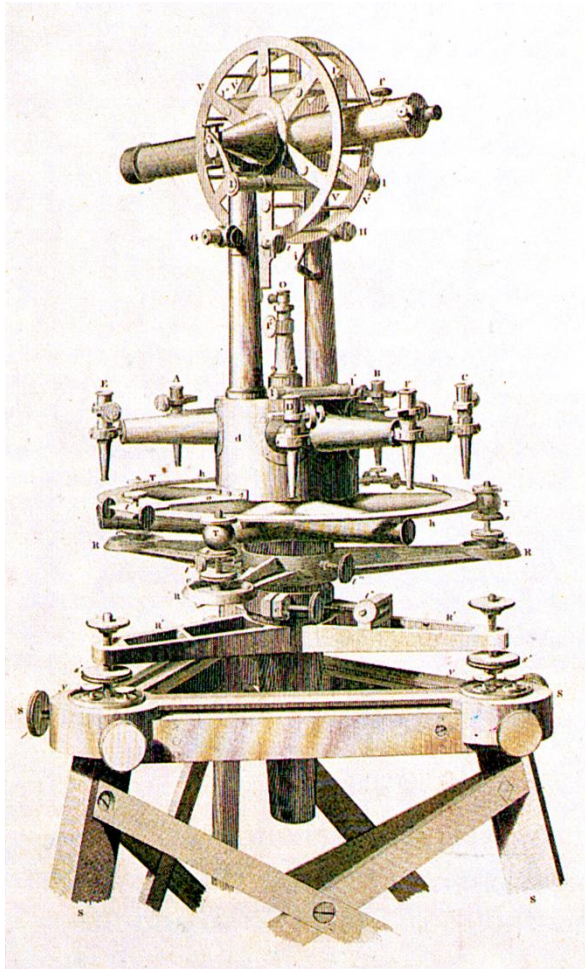
THOMAS AISKEW LARCOM

Thomas Drummond - Surveyor, inventor and politician

‘Step into the Limelight’



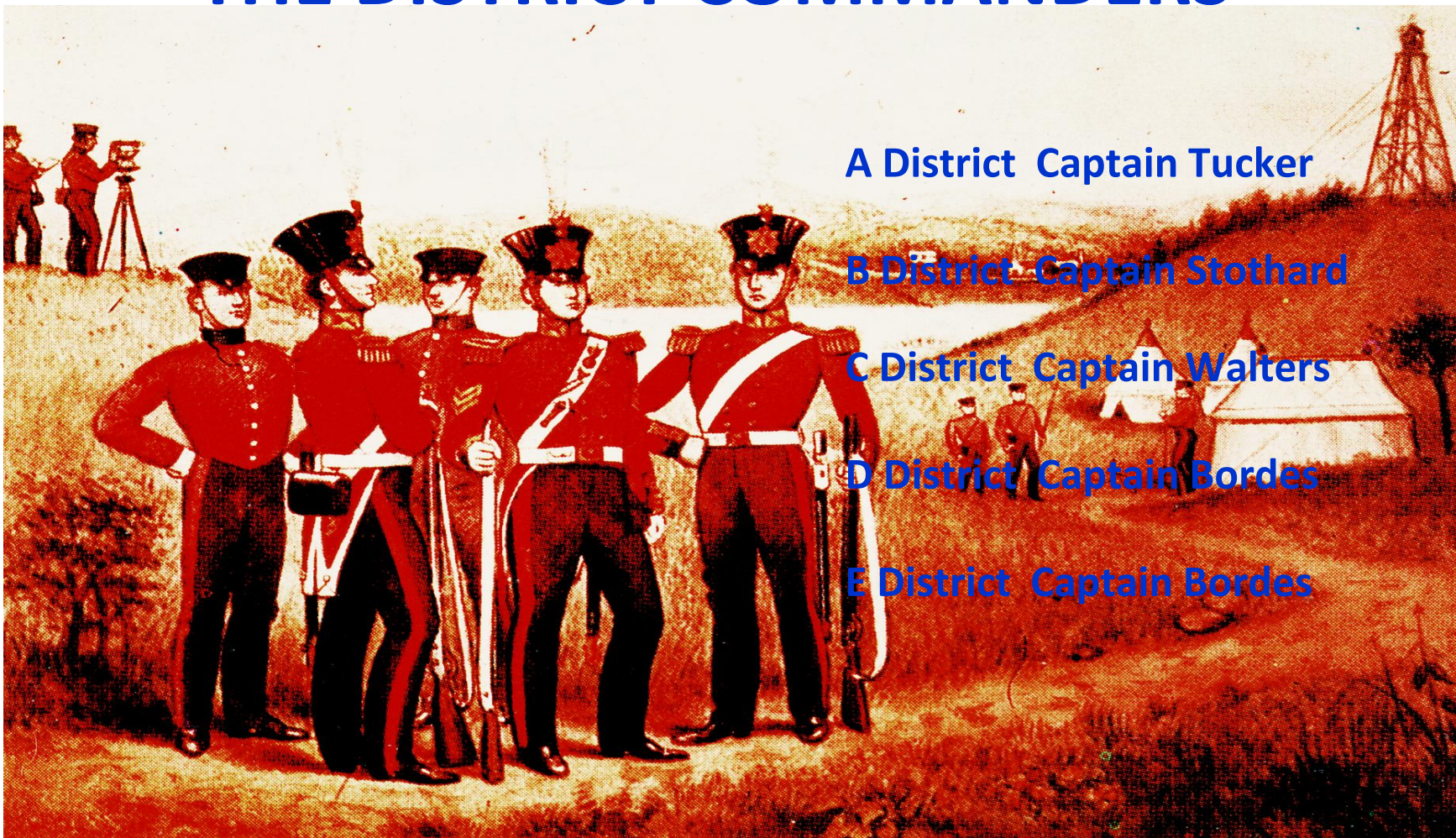
TRIANGULATION



LOUGH FOYLE BASE LINE



THE DISTRICT COMMANDERS



A District Captain Tucker

B District Captain Stothard

C District Captain Walters

D District Captain Bordes

E District Captain Bordes

RICHARD GRIFFITH

General Valuation of Ireland, Made in pursuance of 9 & 10 Vic., Cap. 110.

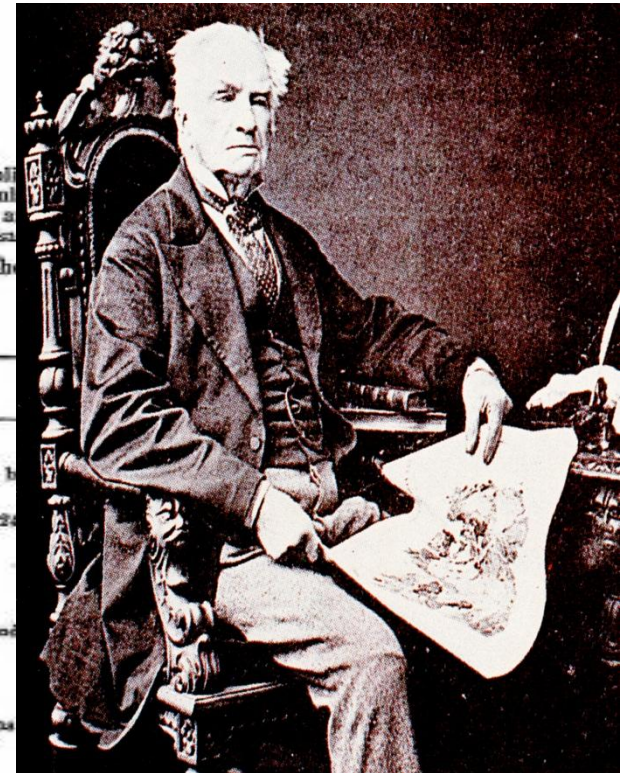
COUNTY OF DUBLIN. BARONY OF CASTLEKNOCK. NORTH DUBLIN AND CELBRIDGE UNIONS.

At a Meeting for the consideration of Appeals in the Barony of Castleknock, and County of Dublin, at the Sessions-house at Blanchardstown, on Monday, the 3rd day of January, 1848, pursuant to petition from the Commissioner of Valuation, and thence adjourned to the same place, 4th January, 1848, and adjourned to the same place, 27th January, 1848, and thence adjourned to 8th March, 1849, at the same place.

The Sub-Commissioners of Valuation, who were appointed for the purpose of examining into the same, made the following alterations.

PARISH OF CASTLEKNOCK.

No. on Map.	Location on Map.	Names of Tenants and Occupiers.	Observations.
1		ABBOTSTOWN. James Hans Hamilton, Esq.,	Land valued at 215 <i>l.</i> 10 <i>s.</i> , raised to 237 <i>l.</i> 1 <i>s.</i> John Nelson's house valued at 11 <i>l.</i> , lessor, James H. Hamilton, Esq., to be entered by him.
1		ANNFIELD. Lawrence Reynolds, .	Land valued at 36 <i>l.</i> 1 <i>s.</i> , raised to 39 <i>l.</i> 13 <i>s.</i> ; and house valued at 25 <i>l.</i> 2 <i>s.</i> , raised to 28 <i>l.</i> 2 <i>s.</i>
9	a	ASHTOWN. John Cooker, Esq., .	House valued at 40 <i>l.</i> , raised to 45 <i>l.</i>
3	a	Rev. Wm. Alex. Seyille, .	House valued at 54 <i>l.</i> , raised to 63 <i>l.</i>
5	a	James Deane, Esq., .	House valued at 60 <i>l.</i> , raised to 80 <i>l.</i>
		Midland Great Western Railway and Royal Canal Co.,	Valued at 54 <i>l.</i> , now divided into—Railway, 272 fiscal perches, value 304 <i>l.</i> 2 <i>s.</i> ; and lands, 273 fiscal perches, value 27 <i>l.</i> 6 <i>s.</i>
1		ASTAGOR. Matthew Rice, .	Land valued at 39 <i>l.</i> 1 <i>s.</i> , raised to 45 <i>l.</i> 10 <i>s.</i>
2		Patrick Tuile, .	Land valued at 3 <i>l.</i> 12 <i>s.</i> , raised to 3 <i>l.</i> 13 <i>s.</i> ; and house valued at 8 <i>l.</i> , raised to 10 <i>l.</i>
3		Thomas McGee, .	House, office, stables, and garden; lessor, Thomas Kavanagh, Esq., should be Thomas Lee, Esq.
4		Lavinia Wilson, .	Land valued at 2 <i>l.</i> 17 <i>s.</i> , raised to 3 <i>l.</i> 11 <i>s.</i> ; and house valued at 12 <i>l.</i> , raised to 15 <i>l.</i>
9	a	Thomas Lidy, .	House and land; lessor, Thomas Kavanagh, Esq., should be Thomas Lee, Esq.
5		Thomas Lidy, .	House; lessor, Thomas Kavanagh, Esq., should be Thomas Lee, Esq.



Valuation of Ireland

PLANT GEOGRAPHY

Copperplate print
from the
Templemore
memoir 1837




EARLY PROMOTION MATERIAL

ORDNANCE SURVEY
NEW PUBLICATION
PLAN OF
DUBLIN
AND
ENVIRONS

In 4 colours with Grid reference and index to Streets and Public Buildings

SCALE - 1". 20,000 (3.168 INCHES TO 1 MILE)

Price 2/- Linen-backed 6^d extra.




ORDNANCE SURVEY
MAPS


On a Scale of *Twenty-five* Inches to *One* Mile
Show the acreage of every field & enclosure

Price *Five Shillings* each.


ORDNANCE SURVEY MAPS.



$\frac{1}{4}$ -Inch Scale, or 4 miles to 1 inch. Each sheet measures 18 inches by 12 inches and contains 3,456 Square miles. For motoring.

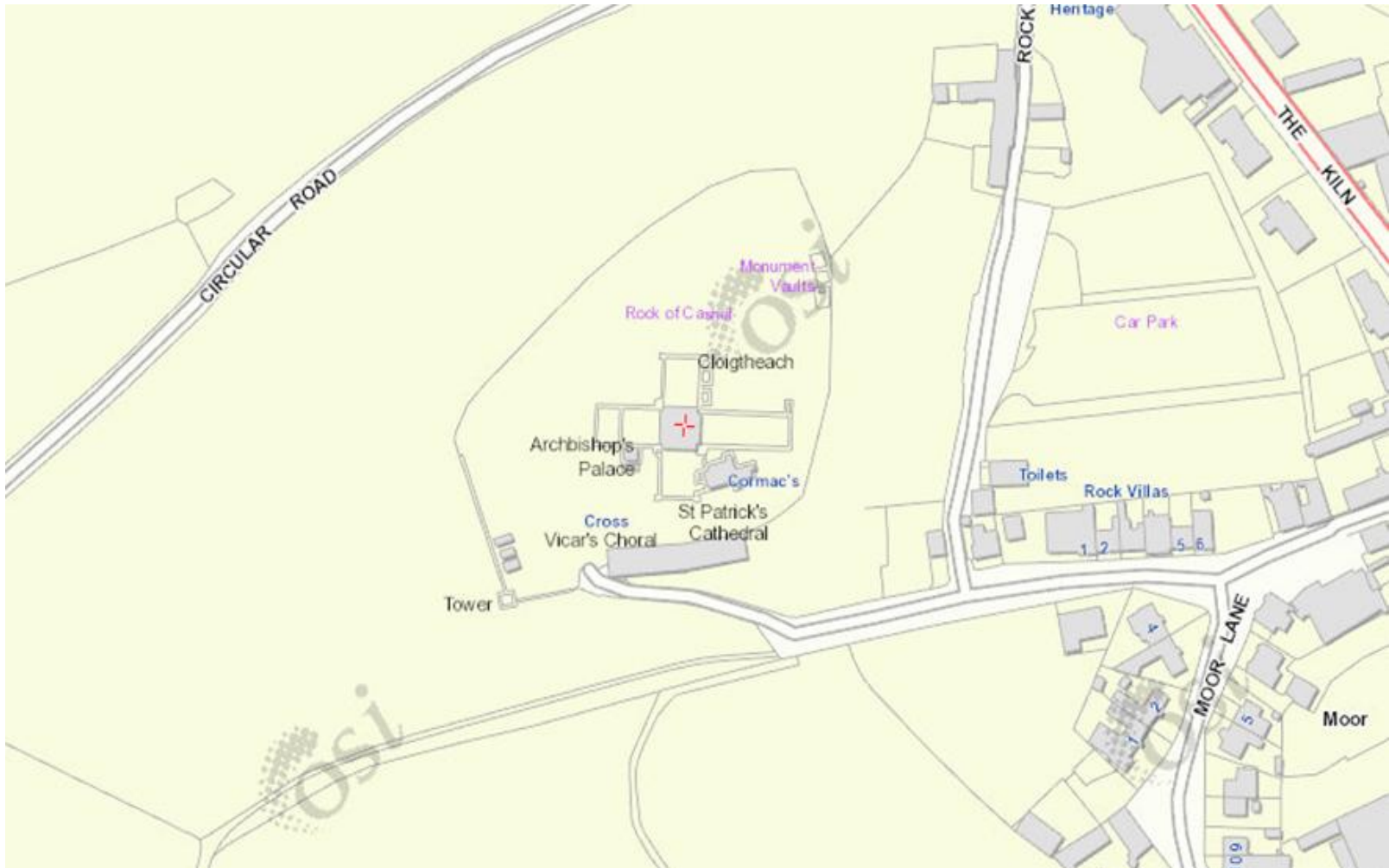


$\frac{1}{2}$ -Inch Scale, or 2 miles to 1 inch. Each sheet measures 27 inches by 18 inches and contains 1,944 Square miles. For cycling.

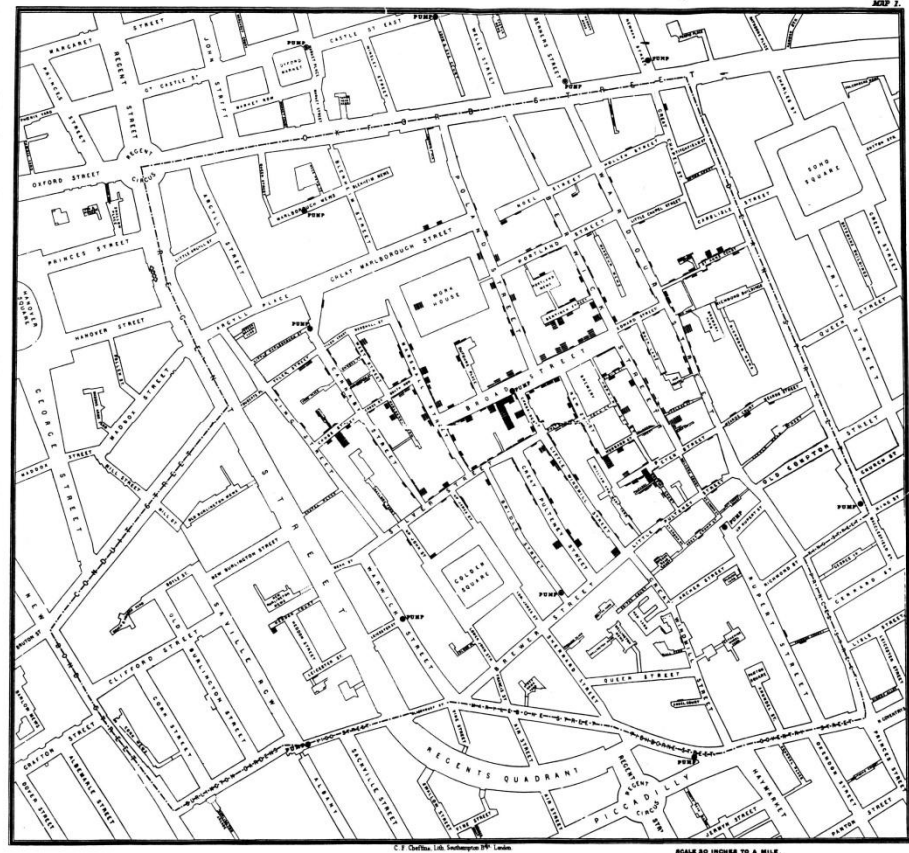


1-Inch Scale, or 1 inch to 1 mile. Each sheet measures 18 inches by 12 inches and contains 216 Square miles. For walking.

We have gone from....



Using GIS



Used a map to track instances of Cholera in London – managed to identify the source as one particular water pump

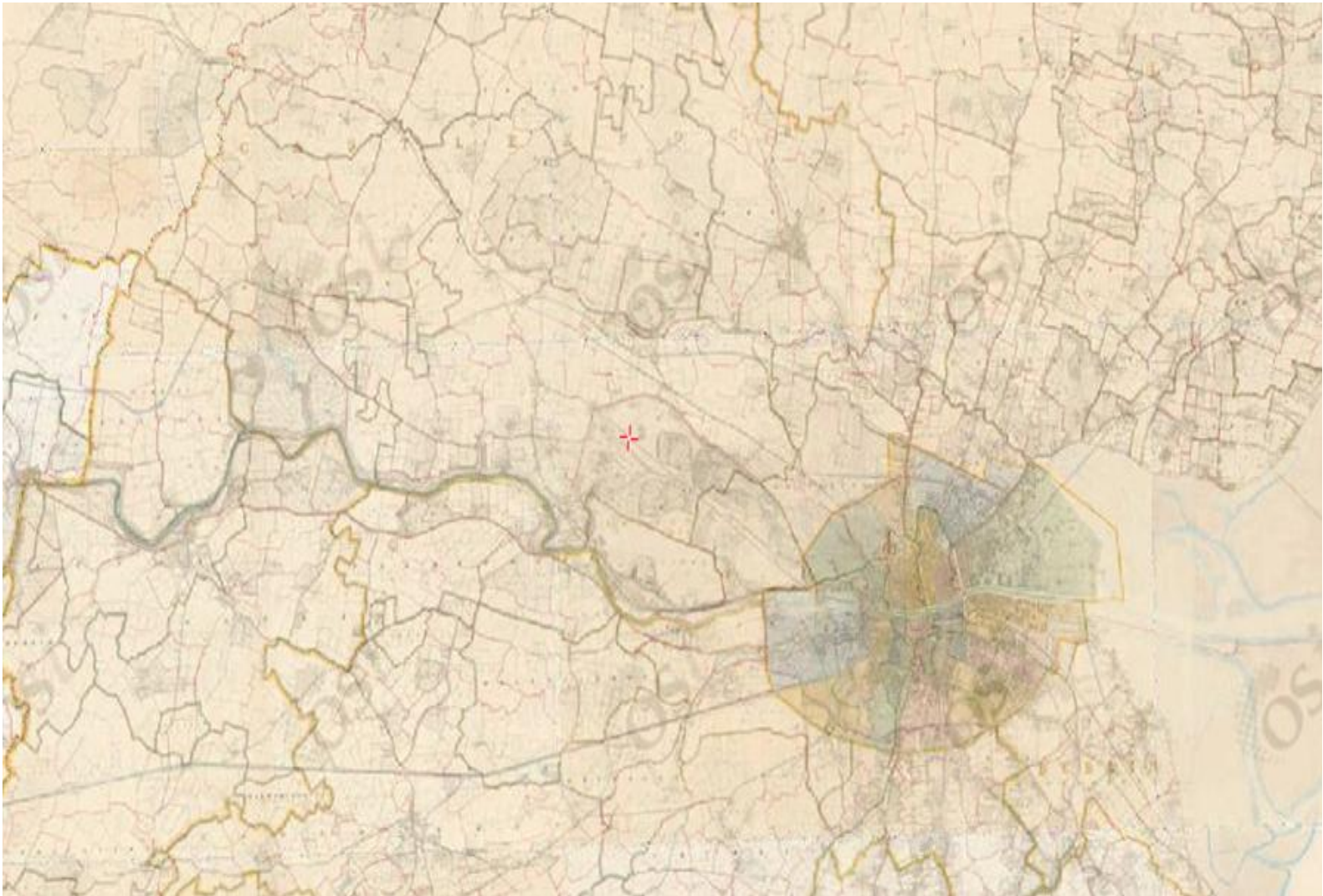
How can we help Genealogists?



- Historic Mapping
 - 1st Ed 6 inch Mapping
 - 1st ed 25 inch Mapping
 - Geographic location
- Townland Boundaries
- Placenames
- Free online Viewer



1st edition 6 inch Mapping 1824 - 1842



1st Ed 25 Inch Mapping 1893 - 1913



- Townland Boundaries
 - Approx 63,000 townlands within Ireland
 - All listed on our Historic Maps
- Placenames
 - Valuable record of placenames of Ireland for the period
 - Can help find locations where the name no longer exists

Online Viewer www.osi.ie

- Free to use
- Can zoom to street level (1:2000)
- Shows the environment our ancestors lived in
- Allows search using
 - Street name
 - Townland
 - Sheet number
 - Co-ordinate

Why are these important?

- 6 inch Survey coincides with the Great Famine in Ireland 1840's
- 25inch survey coincides with the census 1901 and 1911
- Detailed Mapping showing Townlands, field boundaries and dwellings for the periods



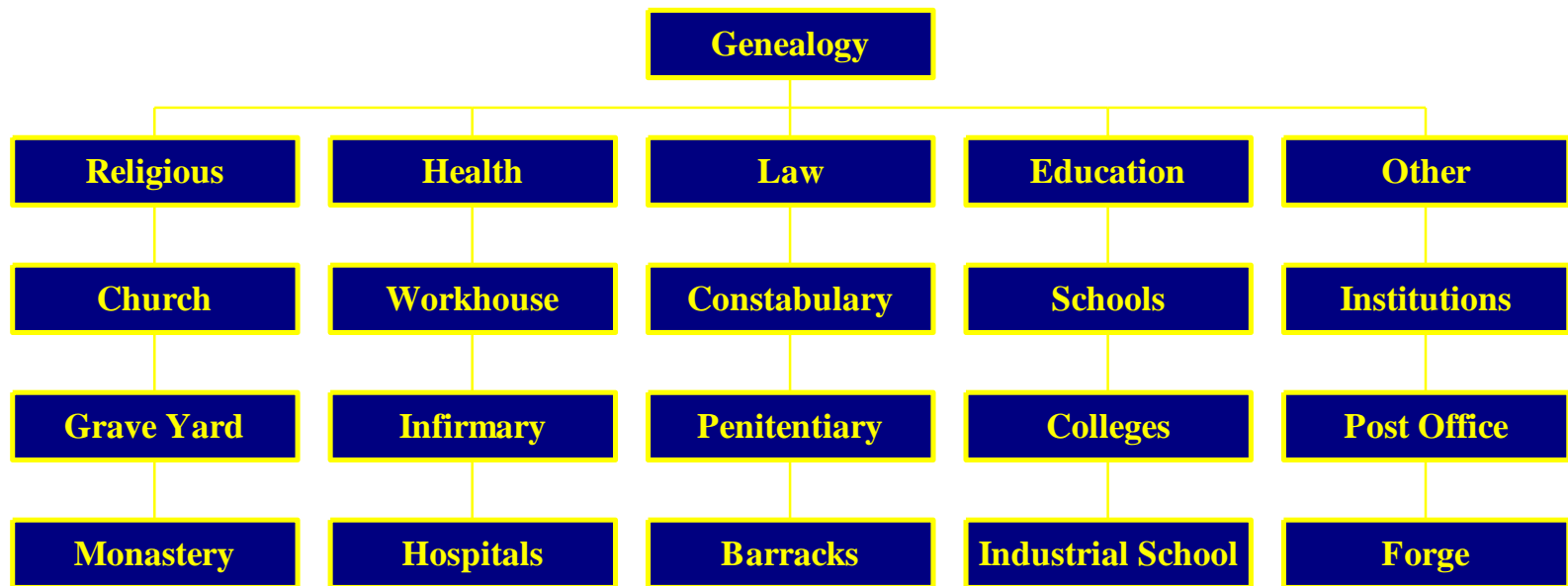
Geocoding

Layers of information was captured when geocoding took place - Environmental

Enviroment		
Industry	Land Features	Water
Mills	Mines	Flood Areas
Foundaries	Quarries	Seasonal Lakes
Factories	Gravel Pits	Springs
	Coal Pits	Wells

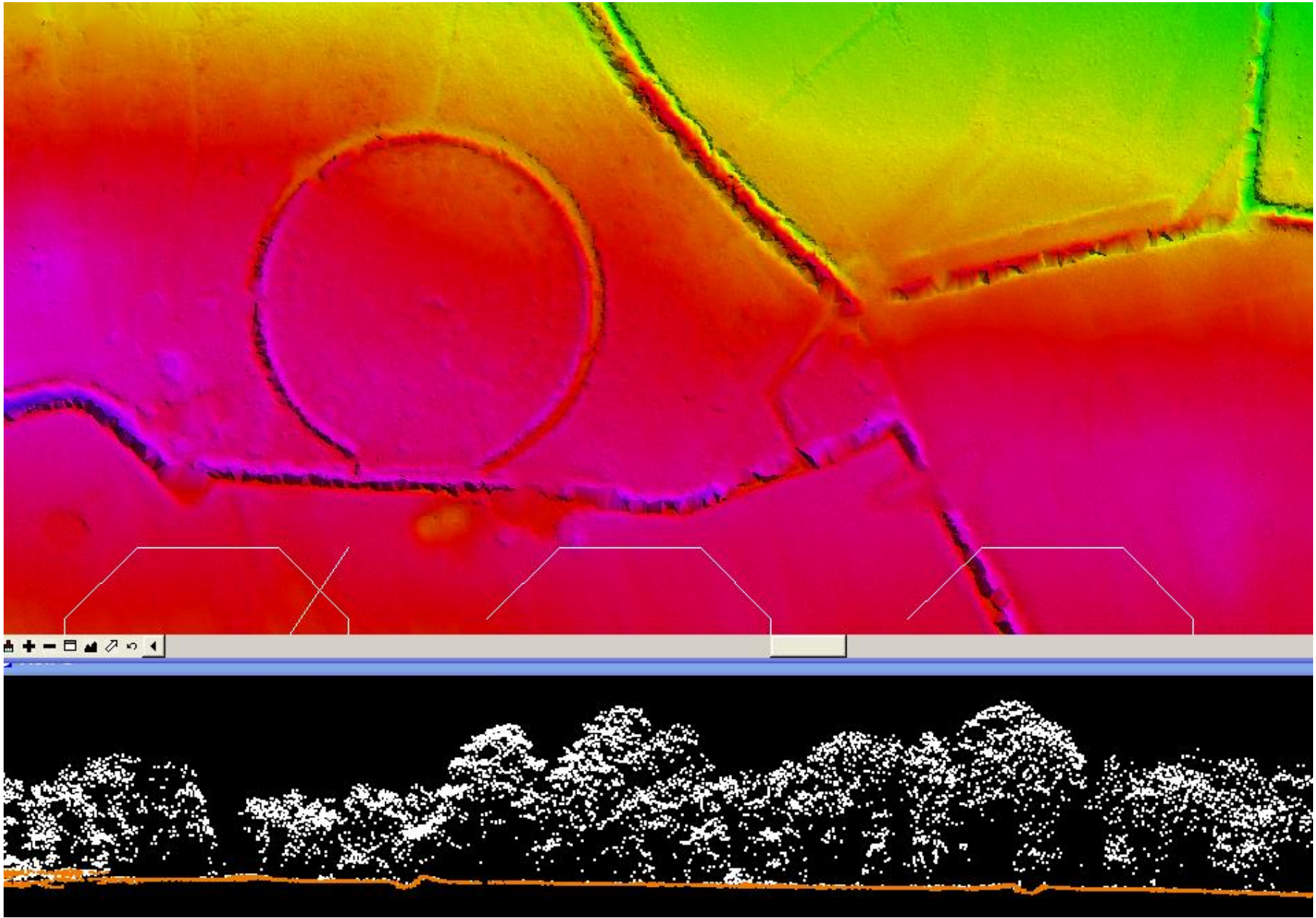
Geocoding

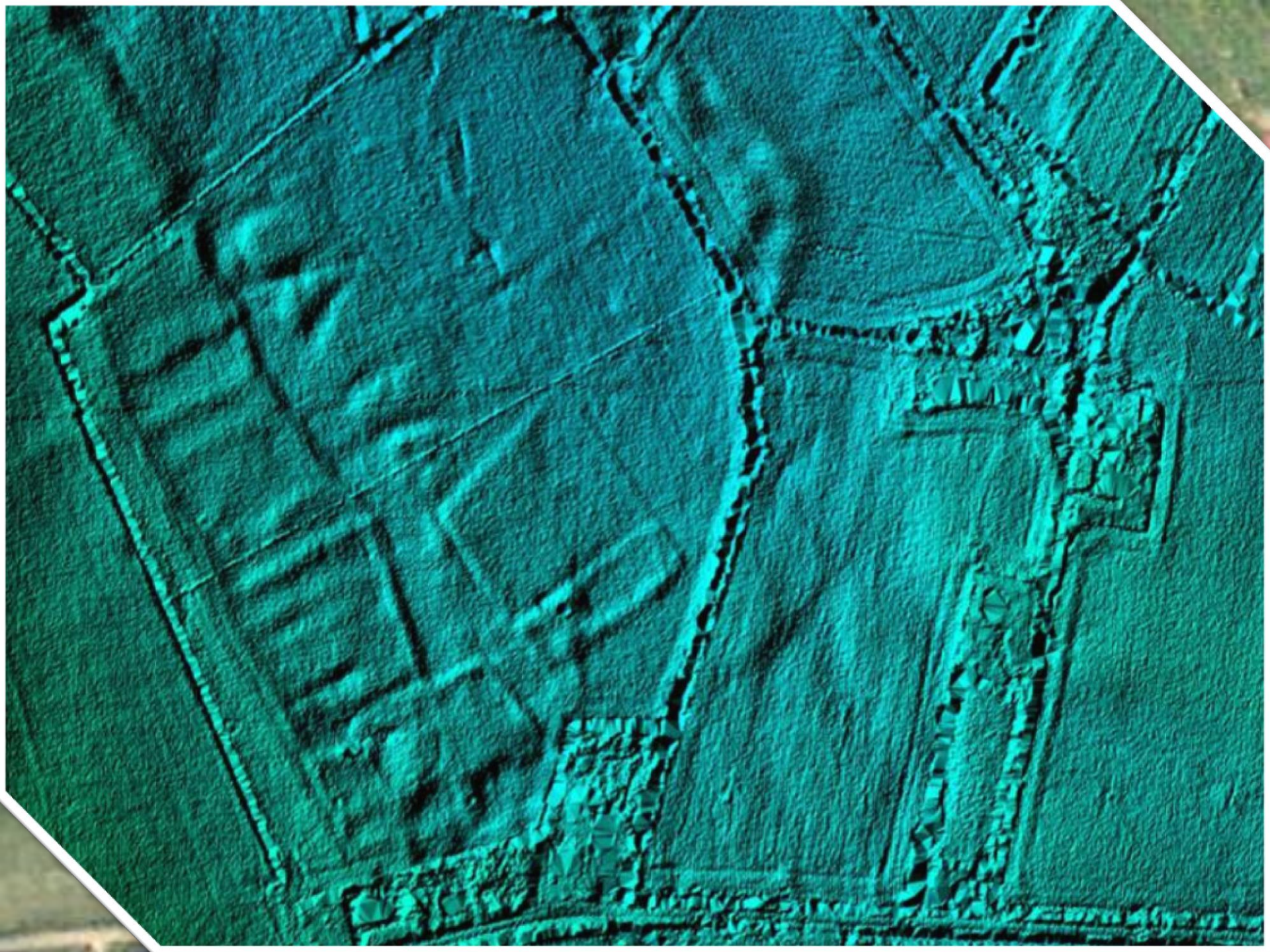
Layers of information was captured when geocoding took place - Genealogical



New Technology that may help!

LiDAR

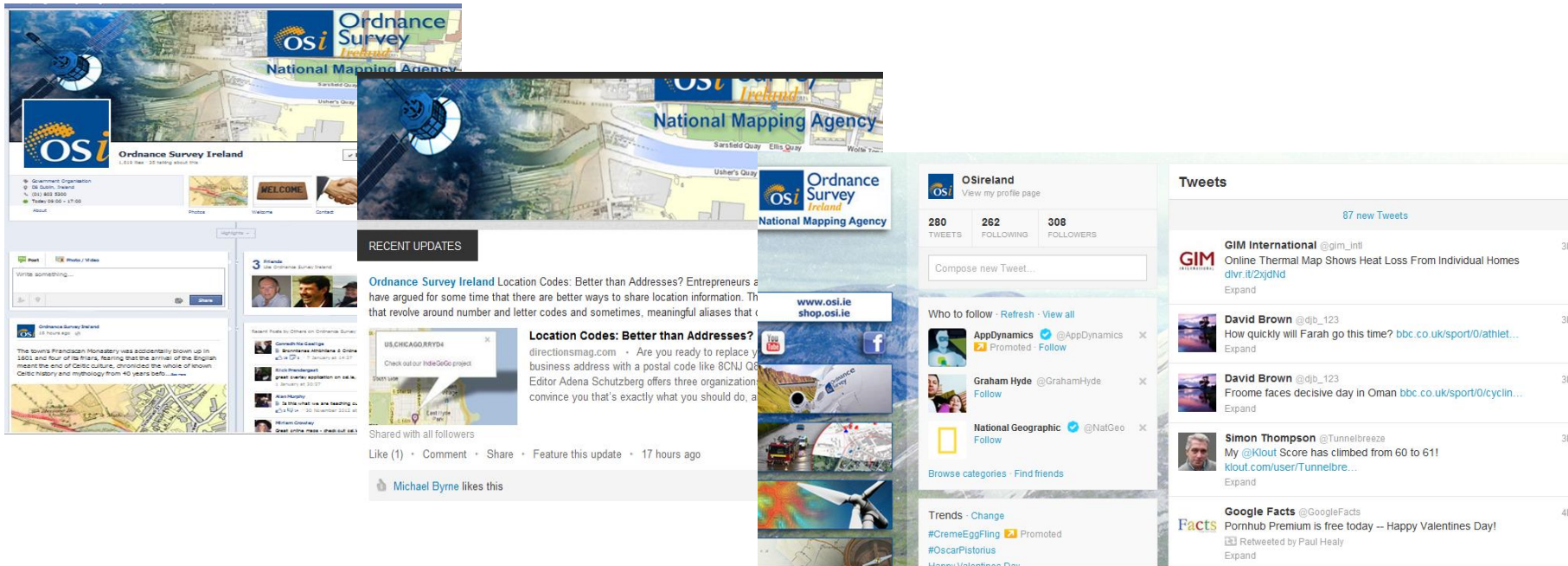




Tracking Change through time

<http://maps.osi.ie/publicviewer>

Social Media



www.facebook.com/ordnancesurveyireland

<https://twitter.com/osireland>

<http://www.linkedin.com/company/ordnance-survey-ireland>

To Conclude!

<https://www.youtube.com/watch?feature=playerembedded&v=ZCp-JSVSNZM>

Any Questions?

Tony.murphy@osi.ie

Dominic.cronin@osi.ie

Colm.brennan@osi.ie